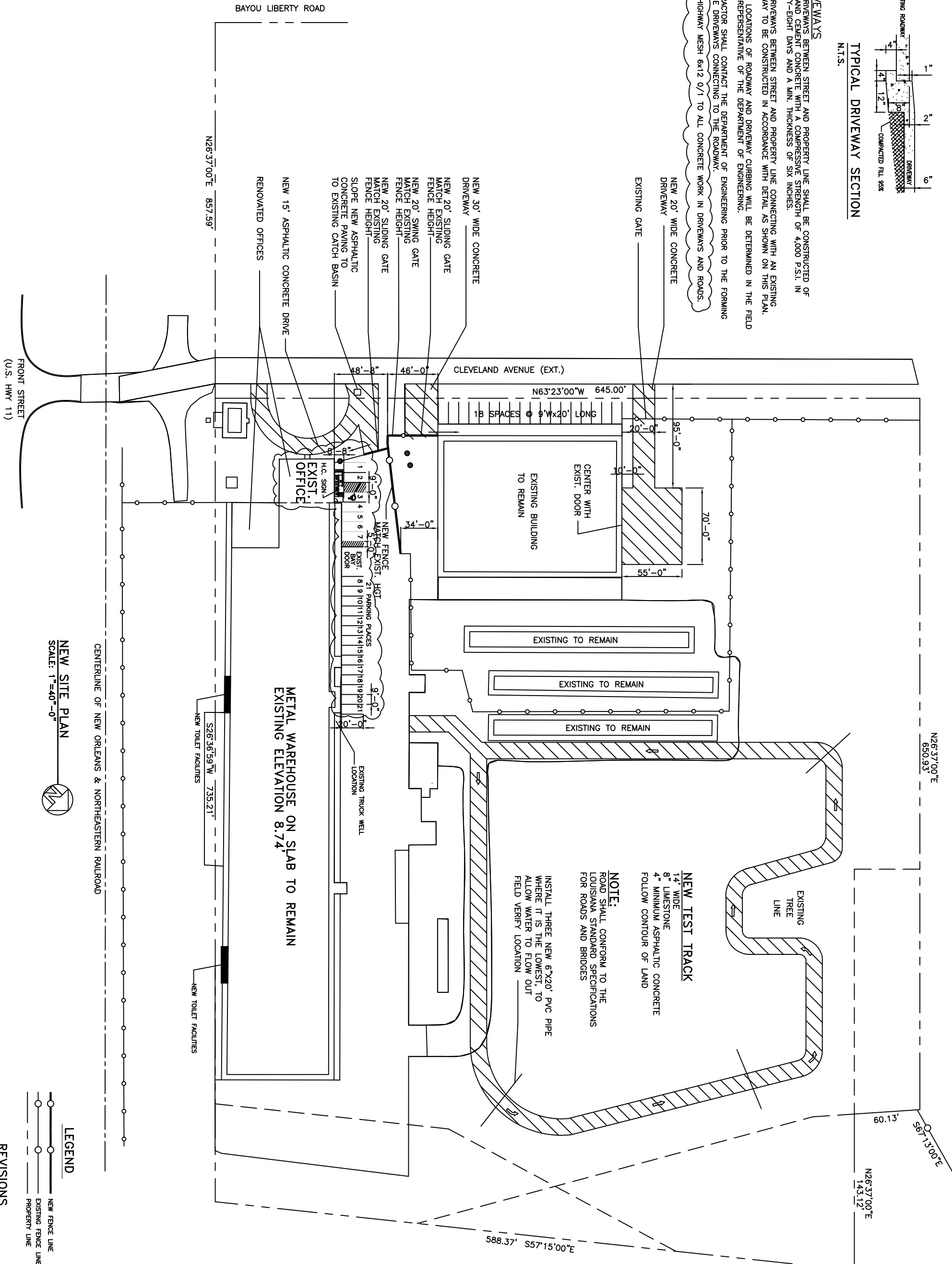


TYPICAL DRIVEWAY SECTION
N.T.S.

- DRIVEWAYS**
1. ALL DRIVEWAYS BETWEEN STREET AND PROPERTY LINE SHALL BE CONSTRUCTED OF PORTLAND CEMENT CONCRETE WITH A COMPRESSIVE STRENGTH OF 4,000 P.S.I. IN TWENTY-EIGHT DAYS AND A MIN. THICKNESS OF SIX INCHES.
 2. ALL DRIVEWAYS BETWEEN STREET AND PROPERTY LINE CONNECTING WITH AN EXISTING ROADWAY TO BE CONSTRUCTED IN ACCORDANCE WITH DETAIL AS SHOWN ON THIS PLAN.
 3. EXACT LOCATIONS OF ROADWAY AND DRIVEWAY CURBING WILL BE DETERMINED IN THE FIELD BY A REPRESENTATIVE OF THE DEPARTMENT OF ENGINEERING.
 4. CONTRACTOR SHALL CONTACT THE DEPARTMENT OF ENGINEERING PRIOR TO THE FORMING OF THE DRIVEWAYS CONNECTING TO THE ROADWAY.
 5. ADD HIGHWAY MESH 6x12 0/1 TO ALL CONCRETE WORK IN DRIVEWAYS AND ROADS.



- 1 12/21/04 ADDED NOTES
2 01/02/05 REVISED PARKING AROUND OFFICE

NEW SITE PLAN

TEXTRON MARINE & LAND
2585 FRONT STREET
SLIDELL, LOUISIANA

TEXTRON OFFICE/WAREHOUSE RENOVATION

DAMMON ENGINEERING, INC.
ARCHITECTS — ENGINEERS
1095 FLORIDA AVENUE 985-649-5832 SLIDELL, LA. 70458
DAMMONENGINEERING.COM

SCALE: AS NOTED

FILE:

JOB NO. 1641

DATE: 12-02-04

SHEET

C-3

OF

LEGEND

- NEW FENCE LINE
EXISTING FENCE LINE
PROPERTY LINE

REVISIONS

12-16-04 REVISED SLIDING GATE LOCATION